



## K-RAIL & K-RAIL PLUS



## K-RAIL AND K-RAIL PLUS DISTRIBUTORS

### LEIGHTON SPRINGWORKS

485 Hobart Road, Launceston TAS 7258  
PH: 03 6344 9744

### MIEGEL ENGINEERING

3 Howard Road, Murray Bridge SA 5253  
PH: 08 8532 3222

### INFRABUILD STEEL CENTRE

1 Howson Way, Bibra Lake Spearwood WA 6965  
PH: 08 9418 9877

### STEEL SUPPLIES WAGGA WAGGA

12 Say Street, Wagga Wagga NSW 2650  
PH: 02 6971 8255

### DIRECT STEEL WAGGA WAGGA

35 Mooroong Street, Wagga Wagga NSW 2650  
PH: 04 6764 1581

### STEEL SUPPLIES BEGA

38 West Street, Bega NSW 2550  
PH: 02 6494 7600

### STEEL SUPPLIES ALBURY

354 - 366 Urana Road, Albury NSW 2641  
PH: 02 6040 2000

### STEEL SUPPLIES DENILQUIN

Cnr Wakool Road and Kelly Street, Deniliquin NSW 2710  
PH: 03 5881 5541

### RURAL SUPPLIES COOLAMON

82 Cowabbie Street, Coolamon NSW 2701  
PH: 02 6927 3024

### DST RURAL SILVERDALE

2330 Silverdale Road, Silverdale NSW 2752  
PH: 04 1087 9331

### STEEL SUPPLIES MILDURA

1 Allen Drive, Mildura VIC 3498  
PH: 03 5024 5389

### STEEL SUPPLIES WODONGA

13 Hovell Street, Wodonga VIC 3690  
PH: 02 6024 4000

### WALLA WALLA

60 Commercial Street  
Walla Walla, NSW 2659

📞 02 6029 4700

✉️ [info@kotzur.com](mailto:info@kotzur.com)

### TOOWOOMBA

97 Steger Road  
Charlton, QLD 4350

📞 07 4634 4622

✉️ [enquiry@kotzur.com](mailto:enquiry@kotzur.com)

### PERTH

Unit 3/35 Gillam Drive  
Kelmscott, WA 6111

📞 08 9495 3000

✉️ [info@kotzur.com](mailto:info@kotzur.com)

## APPLICATION

Versatile fencing product suitable for a variety of applications.

Stock yards, holding pens, stock crates and rural and domestic fences.

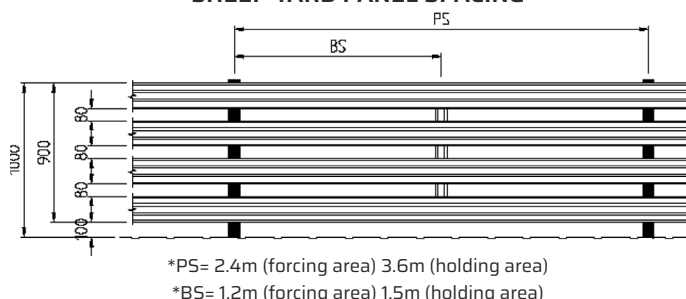
## FEATURES

- Available in 5 thicknesses and 2 widths, standard Z450 galvanised coating.
- Made from High Tensile steel - light weight but very strong.
- Rolled edges and wide rail means people and stock friendly.
- Highly visible for good stock movement.
- Fast and easy to install - welded or screwed into position.
- Available in standard 6 metre lengths, additional cost for custom lengths.
- Proven over 35 years in all environments.

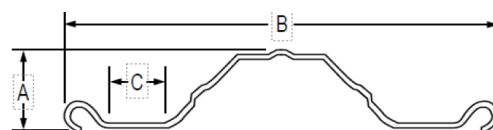
## SPECIFICATIONS Effective 1 October 2024

### K-RAIL

#### SHEEP YARD PANEL SPACING

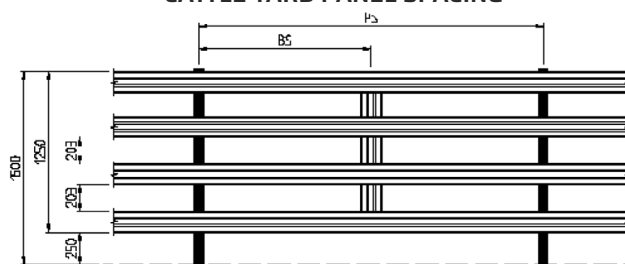


#### KOTZUR K-RAIL SECTION



A=32mm B=165mm (nominal) C=22mm

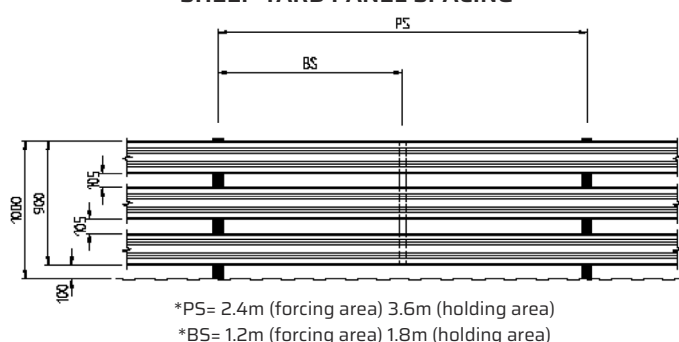
#### CATTLE YARD PANEL SPACING



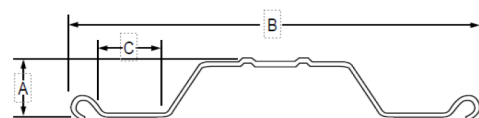
\*PS= 2.4m (forcing area) 3.0m (holding area)  
\*BS= 1.2m (forcing area) 1.5m (holding area)

### K-RAIL PLUS

#### SHEEP YARD PANEL SPACING

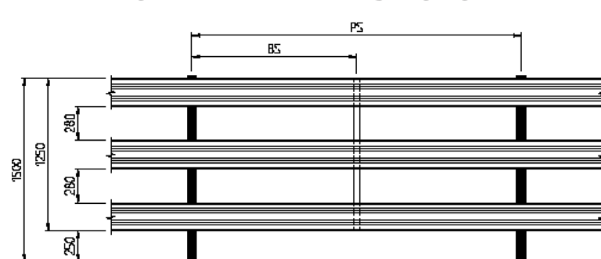


#### KOTZUR K-RAIL PLUS SECTION



A=32mm B=225mm (nominal) C=36mm

#### CATTLE YARD PANEL SPACING



\*PS= 2.4m (forcing area) 3.0m (holding area)  
\*BS= 1.2m (forcing area) 1.5m (holding area)

**WARRANTY** - Kotzur Pty Ltd are confident in the quality of the products they design, manufacture and supply.

The following warranties apply:

- Structures including footings, elevator towers, walkways, silos etc - 5 years.
- Mechanical equipment including conveyors but excluding drive motors - 12 months.
- OEM equipment including drive motors and gearboxes - supplier warranty (generally 3 months).

This guarantee covers faulty design, engineering and workmanship; however this does not include problems arising from factors over which Kotzur has no control. These factors include footings constructed by others, negligent damage, unintended use of products, poor maintenance or care, normal wear and tear. Equipment manufactured by others and brought in by Kotzur Pty Ltd (e.g. Silo unloaders, aeration equipment) carry their respective manufacturers warranty. Please note this warranty excludes consequential losses.